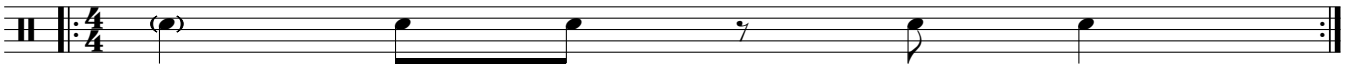


# Idea #28

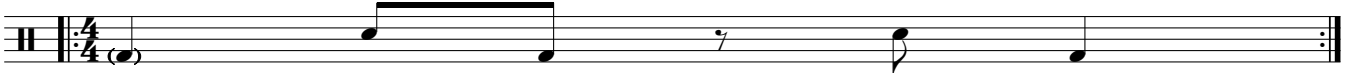
## Advanced Comping Developments

Copyright © T R Lake  
<https://www.onjazzdrumming.com>

1A: Basic Pattern



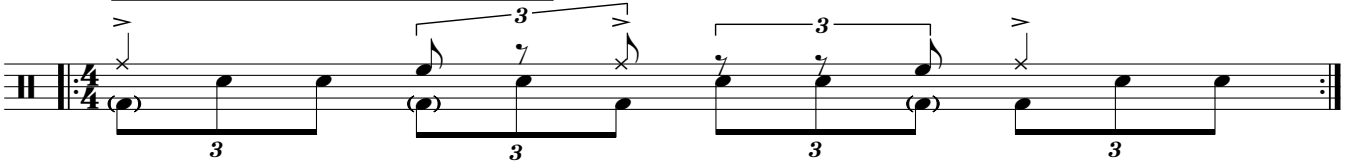
1B: Short & Long



1C: Filling in with triplets



1D: Dawson Short - Long Voicing with triplets



1E: Ralph Peterson accented Elvinesque triplets



2A: Basic Pattern



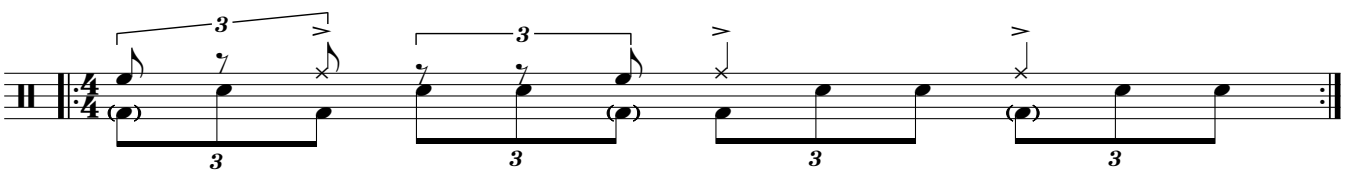
2B: Short & Long



2C: Filling in with triplets



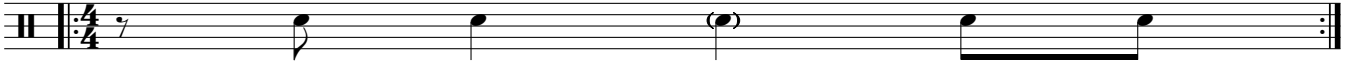
2D: Dawson Short - Long Voicing with triplets



2E: Ralph Peterson accented Elvinesque triplets

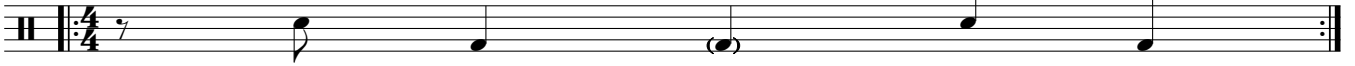


3A Basic Pattern



Musical notation for 3A Basic Pattern in 4/4 time. The staff begins with a treble clef and a key signature of one flat. The rhythm consists of a quarter rest, followed by a quarter note, a half note, a dotted half note, and a quarter note.

3B: Short & Long



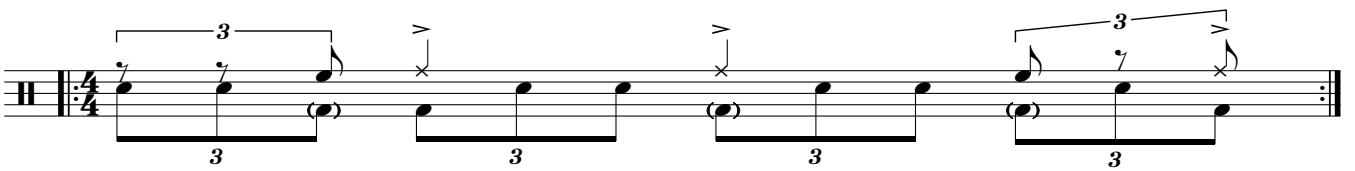
Musical notation for 3B: Short & Long in 4/4 time. The staff begins with a treble clef and a key signature of one flat. The rhythm consists of a quarter rest, followed by a quarter note, a half note, a dotted half note, and a quarter note.

3C: Filling in with triplets



Musical notation for 3C: Filling in with triplets in 4/4 time. The staff begins with a treble clef and a key signature of one flat. The rhythm consists of four groups of eighth notes, each marked with a triplet bracket and the number 3.

3D: Dawson Short - Long Voicing with triplets



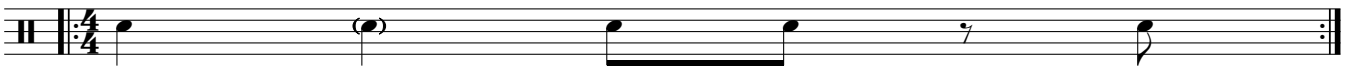
Musical notation for 3D: Dawson Short - Long Voicing with triplets in 4/4 time. The staff begins with a treble clef and a key signature of one flat. The rhythm consists of four groups of eighth notes, each marked with a triplet bracket and the number 3. The first and third groups have a slur over them, and the second and fourth groups have a slur under them.

3E: Ralph Peterson accented Elvinesque triplets



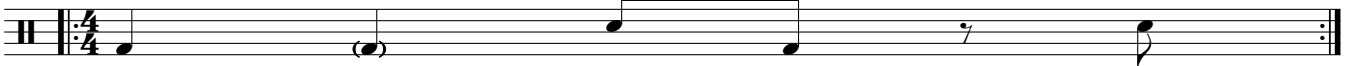
Musical notation for 3E: Ralph Peterson accented Elvinesque triplets in 4/4 time. The staff begins with a treble clef and a key signature of one flat. The rhythm consists of four groups of eighth notes, each marked with a triplet bracket and the number 3. The first and third groups have an accent (>) over them, and the second and fourth groups have an accent (>) under them.

4A Basic Pattern



Musical notation for 4A Basic Pattern in 4/4 time. The staff begins with a treble clef and a key signature of one flat. The rhythm consists of a quarter note, a dotted half note, a quarter note, a quarter rest, and a quarter note.

4B: Short & Long



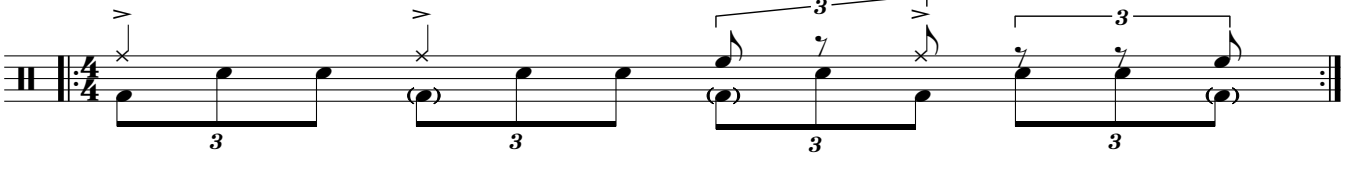
Musical notation for 4B: Short & Long in 4/4 time. The staff begins with a treble clef and a key signature of one flat. The rhythm consists of a quarter note, a dotted half note, a quarter note, a quarter rest, and a quarter note.

4C: Filling in with triplets



Musical notation for 4C: Filling in with triplets in 4/4 time. The staff begins with a treble clef and a key signature of one flat. The rhythm consists of four groups of eighth notes, each marked with a triplet bracket and the number 3.

4D: Dawson Short - Long Voicing with triplets



Musical notation for 4D: Dawson Short - Long Voicing with triplets in 4/4 time. The staff begins with a treble clef and a key signature of one flat. The rhythm consists of four groups of eighth notes, each marked with a triplet bracket and the number 3. The first and third groups have a slur over them, and the second and fourth groups have a slur under them.

4E: Ralph Peterson accented Elvinesque triplets



Musical notation for 4E: Ralph Peterson accented Elvinesque triplets in 4/4 time. The staff begins with a treble clef and a key signature of one flat. The rhythm consists of four groups of eighth notes, each marked with a triplet bracket and the number 3. The first and third groups have an accent (>) over them, and the second and fourth groups have an accent (>) under them.